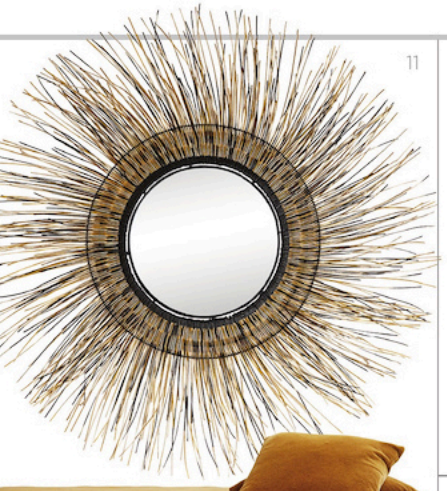
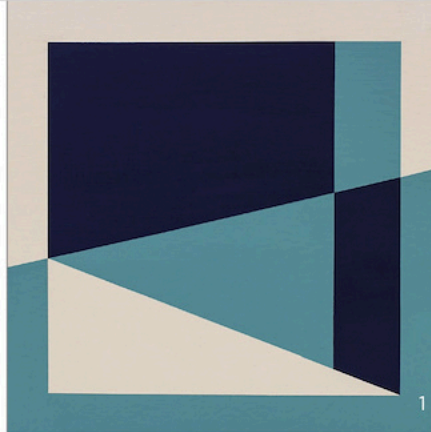


Natural BEAUTY

PIECES FROM ACROSS THE GLOBE CAPTURE THE COLORS OF SEA AND EARTH



THE BLUES



Leather bolsters embossed with sugar skulls



EARTH TONES



Curves inspired by the body of the Galapagos sea lion



1. *Assembly 02* by [Rodrigo Martin](#), [Gallery 212](#) / 2. Kane chair, [Bradington-Young](#) / 3. Rosinda armchair, [Norwalk Furniture](#)
 4. Apex throw, [Johanna Howard Home](#) / 5. Hexagon martini table, [Miranda Kerr Home](#), [Universal Furniture](#) / 6. Sorrell three-drawer chest, [Hooker Furniture](#) / 7. Reverie collection, [Kalaty Rug](#) / 8. Holt coffee table, [Made Goods](#) / 9. Galapagos sofa, [Adriana Hoyos Furnishings](#)

10. Spring & Heron in gold, [York Wallcoverings](#) / 11. Andes mirror, [Arteriors](#) / 12. June chair, [Four Hands](#) / 13. 450 leather bed, [Lancaster](#)
 14. Mina Victory Green Gold pillow, [Nourison](#) / 15. Ceramic pottery, [Schwung Home](#) / 16. Fade Earth runner, [New Moon Rugs](#)
 17. Cascade etagere, [A.R.T. Furniture](#) / 18. Beck rug, [Surya](#) / 19. Berkley sofa, [Jonathan Charles](#)